

*A heart connection precipitates the building
of a mountain house in the making for 16 years*

LABOR

STORY **DANA W. TODD** PHOTOS **LINDSAY SALAZAR**
ARCHITECTURE **INTERFUSE ARCHITECTS**
INTERIOR DESIGN **SUZANNE MCALEER DESIGN**
CONSTRUCTION **CAMEO HOMES**

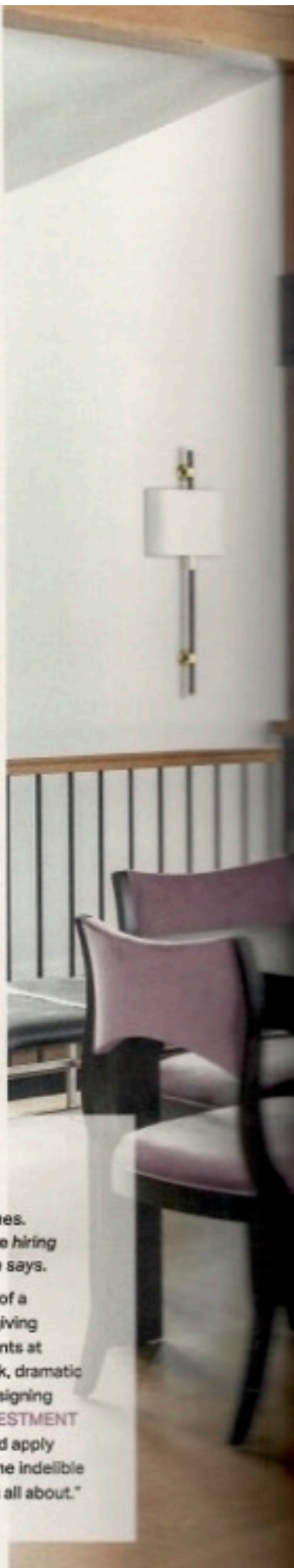
OF LOVE



"There's something about white sofas matched with the hearty fireplace that takes your breath away," says designer Suzanne McAleer. The nearby pleated leather Thatcher bench from Interlude Home is one of her favorite pieces in the residence.

An arrangement of white Visual Comfort pendants and custom range hood invites a mountain view beyond the window. "It is an artistic moment, especially in the glow of night," says McAleer. Integrated window shades disappear into the ceiling beam when not in use.





BRINGING LUXURY TO LIFE

Designer Suzanne McAleer advises clients on incorporating luxurious touches into their homes. "Find a designer that shares your personal aesthetic and give them creative carte blanche. You're hiring them for their fresh perspective, which often requires stepping out of your comfort zone," she says.

CREATE AN EXPERIENCE Appeal to the senses—the sheen of a lacquer cabinet or the softness of a mohair pillow. "Invest in key pieces that in the moment might feel like a splurge, but they will keep giving back." **CHALLENGE THE CONVENTIONAL** "Fortune favors the bold," McAleer says. Hang pendants at different heights, install an opulent wallcovering in the powder room, or paint the guest room a dark, dramatic color. **BE AN EXHIBITIONIST** Love your Birkin handbag? Create a display case in your closet. "Designing around prized possessions is the ultimate form of self-expression," she says. **PROTECT THE INVESTMENT** Upholster custom furniture in performance fabrics or leathers that can be easily wiped clean, and apply fabric protector to other textiles to prevent them from staining. "Don't let accidental spills become indelible memories. Living in constant fear robs you of living in the moment, and that is what true luxury is all about."



OPPOSITE: The Roedings enjoy sitting in these "super comfortable" Century chairs upholstered in a deep green performance velvet as they watch the golfers and hawks outside the great room's large windows that overlook both the golf course and the mountains. THIS PAGE: Century Furniture's chairs covered in a vibrant Pollack performance velvet add a graceful touch to the dining room filled with stone, wood and steel.

accent wallpaper with a natural look. It looks like bark on a tree but with a hint of gold, which helps bring out the beauty of the contemporary furniture but also the stone fireplace," Cindy says.

Not to be outdone, the dining room features graceful dining chairs and sculptural pendant lighting mixed with organically pleasing wood columns and ceiling beams wrapped with black steel brackets. McAleer partnered with a local cabinetry shop to custom design the walnut dining table with beveled-edge detailing, representing a next-level touch of luxury. "True luxury should feel a little bit reckless, that's what makes it so exhilarating," she says. "When you incorporate a little self-indulgence into a space, suddenly it's not just a room anymore, it's an experience you long to share."

An elegant primary suite features dramatic black tile and marble in the bathroom that contrasts with polished nickel fixtures. A boutique-style walk-in closet with black lacquer cabinetry displays fashion-forward handbag and shoe collections.

Today, the Roedings enjoy the best of both worlds while splitting their time between Park City and a Southeastern beach home. From that first question many years ago, it's a full-circle moment for them. ○

>> For a guide to this home's products and pros, visit mountainliving.com/LaborOfLove



“THIS HOME HITS THE SWEET SPOT. IT'S NOT TOO BIG OR TOO SMALL BUT FUNCTIONAL, COZY AND LIVABLE.”

—BUILDER BRANDON QUINTON, CAMEO HOMES



CLOCKWISE FROM OPPOSITE, TOP: A freestanding Signature Hardware tub and Rohl tub filler add relaxation and functionality while black lacquer built-in cabinetry injects a dose of glam in the primary bathroom. Elegant details such as the sumptuous velvet-covered headboard, Formica®-ed heavy black metal lamp and Holly Hunt champagne vinyl wallcovering add luxury to the primary bedrooms. Stone, cedar, wood timbers and DaVinci roof shakes naturalize the home to its setting.